

NRG 75 CRF

NRG GREENBOARD™ WALL SYSTEM

NRG Energy Efficient Building Systems is pleased to announce a revolution in lightweight cladding systems. NRG Building Systems is the first and only company to achieve **CodeMark™ Accreditation** and **BAL29** Fire Testing on EPS cladding systems.

NRG Greenboard™ Wall System has **CodeMark™** and **BAL29 Accreditation** on the complete system, comprising of NRG Greenboard™, fixings, render beads, polymer modified render, reinforced mesh, textures and membrane coatings. **NRG** is the only company to achieve **CodeMark™ Accreditation** making the system fully **BCA** compliant. NRG Greenboard™ has legislated product acceptance nationwide, giving the consumer total piece of mind and confidence.

NRG Greenboard™ has passed extensive fire testing procedures (in accordance with **AS1530.8.1-2007**), by global testing company Exova Warringtonfire, that enables **NRG Greenboard™** to comply in **BAL29** areas (Bush Fire Attack Level). Used in conjunction with NRG Batten System, (NRG Battens) increases the R-Value to **3.31R**.

Insurance companies are now insisting that EPS cladding systems have **BAL Rating** and **CodeMark™ Accreditation**. Why risk a product that insurance companies will reject. Once again **NRG Greenboard™** gives the designer, certifier, builder and customer total confidence and piece of mind.

For further enquires, please contact NRG on the details below.

Total Thermal R-Value 3.48

p. 07 5535 3111 f. 07 5535 3222
e. sales@nrggreenboard.com
w. www.nrggreenboard.com

PO Box 2405, Burleigh MDC QLD 4220
Factory 4, 32-38 Dover Drive, West Burleigh QLD 4220

NRG 75 CRF

SPECIFIED COMPONENTS FOR BAL AREAS

- 1/ 75mm NRG Greenboard™ 2480 x 1200
- 2/ NRG 125mm x 10 Gauge Bugle Head Screws
- 3/ NRG Greenboard™ 40mm Washers
- 4/ 35mm x 25mm NRG Battens
- 5/ Sisalation: Non Combustible AS1530.2 Wall Wrap (Breather)
- 6/ NRG PVC 6mm Render Bead System
- 7/ Bostik No More Nails
- 8/ Bostik Fireban One Sealant
- 9/ NRG Polymer Modified Render or Rockcote PM100 (6mm)
- 10/ NRG Sand Medium or Rockcote Sandcote (1mm) Tinted Texture
- (OPTIONAL)
- 11/ NRG Shieldcoat or Rockcote Armour Flex (2 coats)

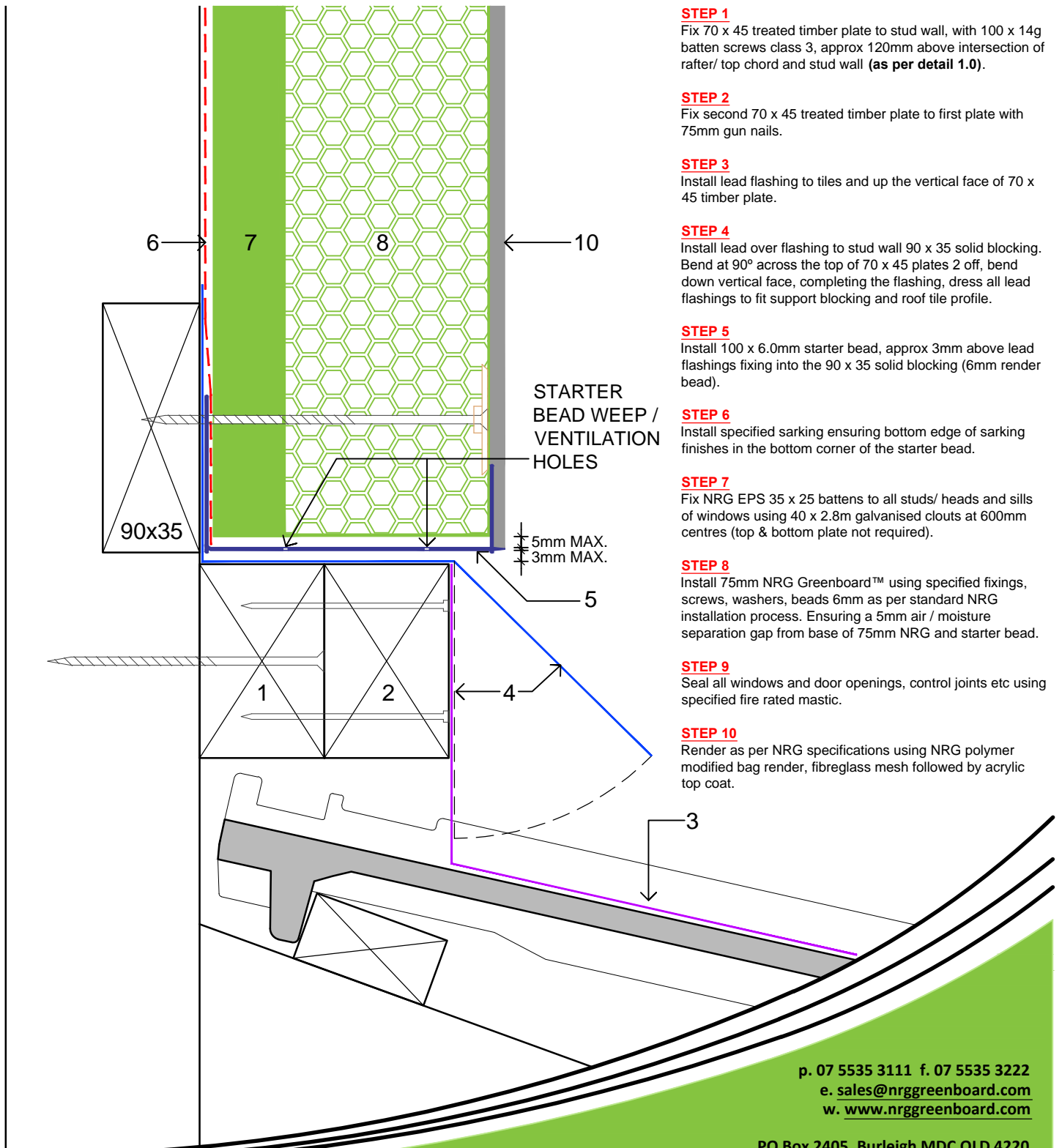
NOTE: For BAL certification these components must not be altered.

NRG 75 CRF

ESSENTIAL TRADE RELATED PRACTICES

- Overall **NRG 75 CRF** Thickness 106mm
- Slab Rebate Dimensions
- Termite Management System in Rebate
- Window/ Door Reveal Width
- First Floor, Subfloor Framing Setback
- Fascia (zero eave) Dimension Setout, Frame to Fascia 106mm
- Double 70 x 45 Pole Plate Over Lower Roof Areas as per **Detail 1.0 and 1.1**
- 2 Piece Sheet Metal Apron Flashing **as per Detail 1.1**
- 2 Piece Lead Flashing Over Tiled Roof Lines. (Note: Solid 90 x 35 blocking to frame as lead flashing vertical support **as per Detail 1.0**)
- Additional Solid Blocking for Fixing Downpipes, Hose Reels, Taps, Lightfittings, Air Conditioning Units etc.
- Installation of Non Combustible Sarking to Manufacturers Specification and Over Laps
- **See Details 1.0, 1.1 and 2.0** Section Details with Sequential step x Step Guide for **NRG 75 CRF** BAL29.

NRG 75 CRF
OVER TILE ROOF LINE
DETAIL 1.0



STEP 1

Fix 70 x 45 treated timber plate to stud wall, with 100 x 14g batten screws class 3, approx 120mm above intersection of rafter/ top chord and stud wall (as per detail 1.0).

STEP 2

Fix second 70 x 45 treated timber plate to first plate with 75mm gun nails.

STEP 3

Install lead flashing to tiles and up the vertical face of 70 x 45 timber plate.

STEP 4

Install lead over flashing to stud wall 90 x 35 solid blocking. Bend at 90° across the top of 70 x 45 plates 2 off, bend down vertical face, completing the flashing, dress all lead flashings to fit support blocking and roof tile profile.

STEP 5

Install 100 x 6.0mm starter bead, approx 3mm above lead flashings fixing into the 90 x 35 solid blocking (6mm render bead).

STEP 6

Install specified sarking ensuring bottom edge of sarking finishes in the bottom corner of the starter bead.

STEP 7

Fix NRG EPS 35 x 25 battens to all studs/ heads and sills of windows using 40 x 2.8m galvanised clouts at 600mm centres (top & bottom plate not required).

STEP 8

Install 75mm NRG Greenboard™ using specified fixings, screws, washers, beads 6mm as per standard NRG installation process. Ensuring a 5mm air / moisture separation gap from base of 75mm NRG and starter bead.

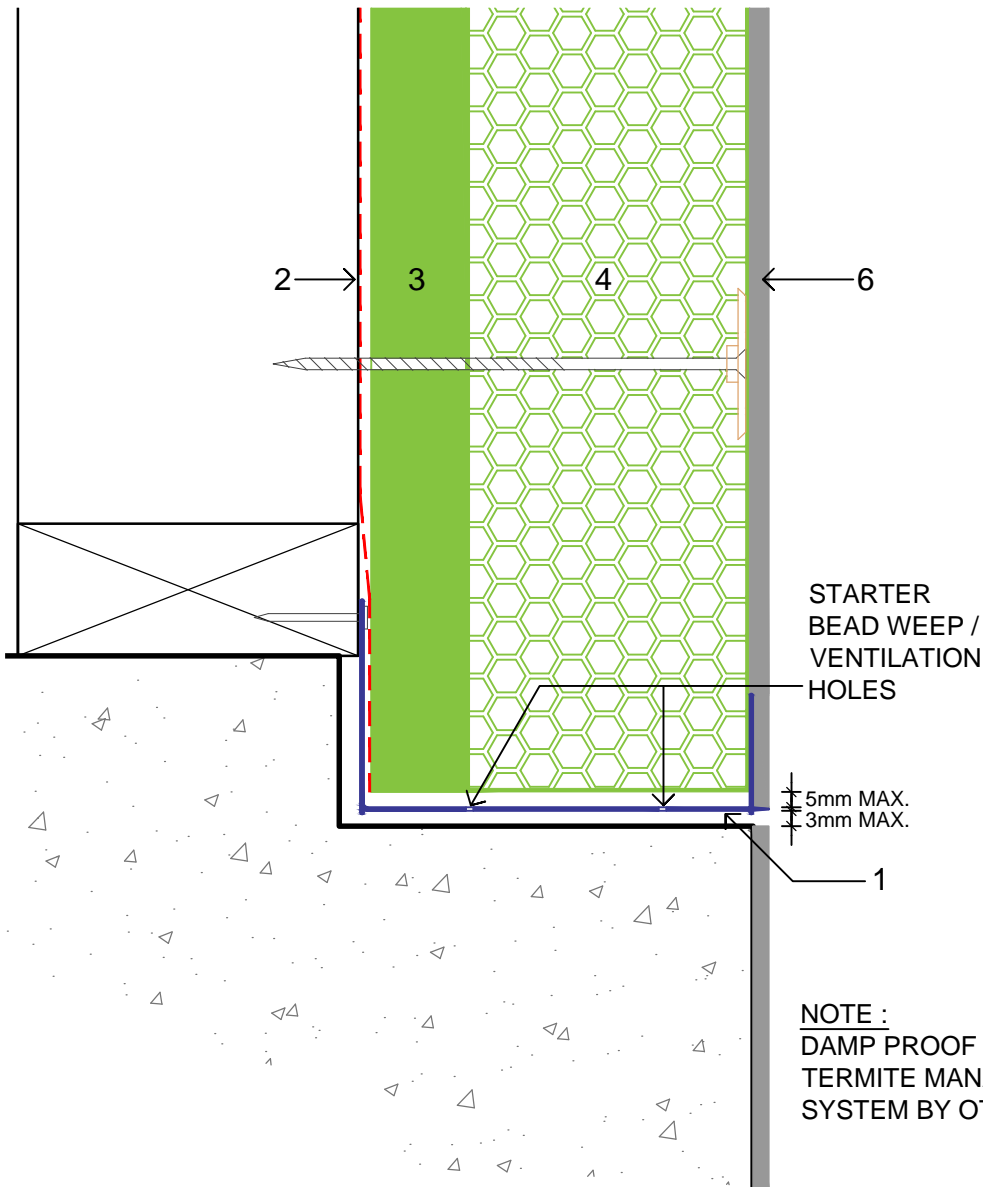
STEP 9

Seal all windows and door openings, control joints etc using specified fire rated mastic.

STEP 10

Render as per NRG specifications using NRG polymer modified bag render, fibreglass mesh followed by acrylic top coat.

NRG 75 CRF
SLAB EDGE DETAIL
DETAIL 2.0



STEP 1

Install 100mm starter 6mm bead, 3.0mm to 5.0mm above rebated slab edge, fix back of bead to bottom plate using 30mm galvanised clouts (as per detail 2.0).

STEP 2

Install specified sarking, ensuring bottom edge of sarking finishes in the bottom corner of starter bead.

STEP 3

Fix NRG EPS 35 x 25mm battens to all studs/heads and sills of windows using 40 x 2.8mm galvanised clouts at 600mm centres. (top & bottom plate not required).

STEP 4

Install 75mm NRG Greenboard™ using specified fixing screws, washers, 6mm beads as per standard NRG installation process. Ensuring a 5mm air / moisture separation gap from base of 75mm NRG and starter bead.

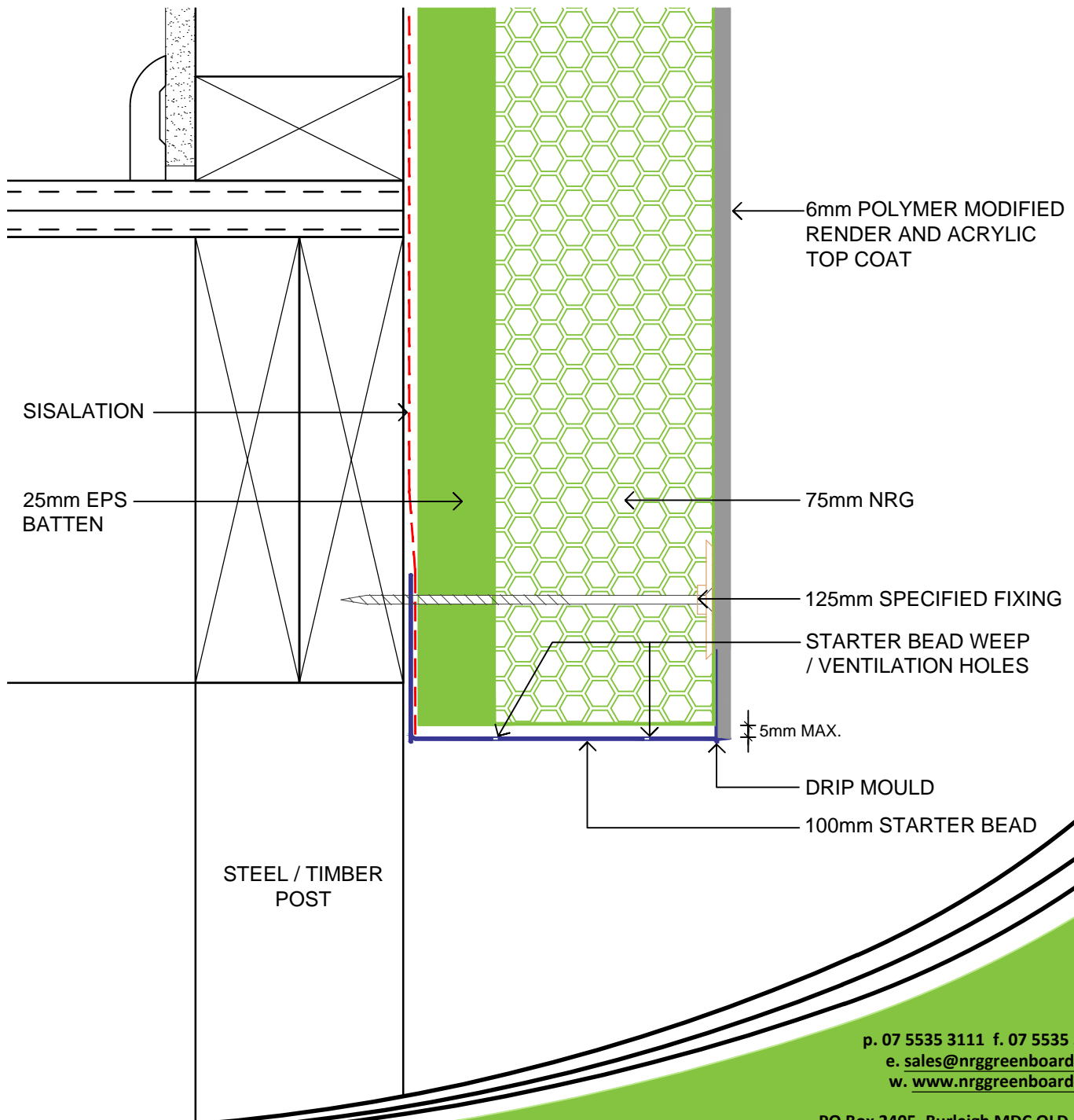
STEP 5

Seal all windows and door openings, control joints etc, using specified fire rated mastic.

STEP 6

Render as per NRG specifications using NRG polymer modified bag render, fibreglass mesh followed by acrylic top coat.

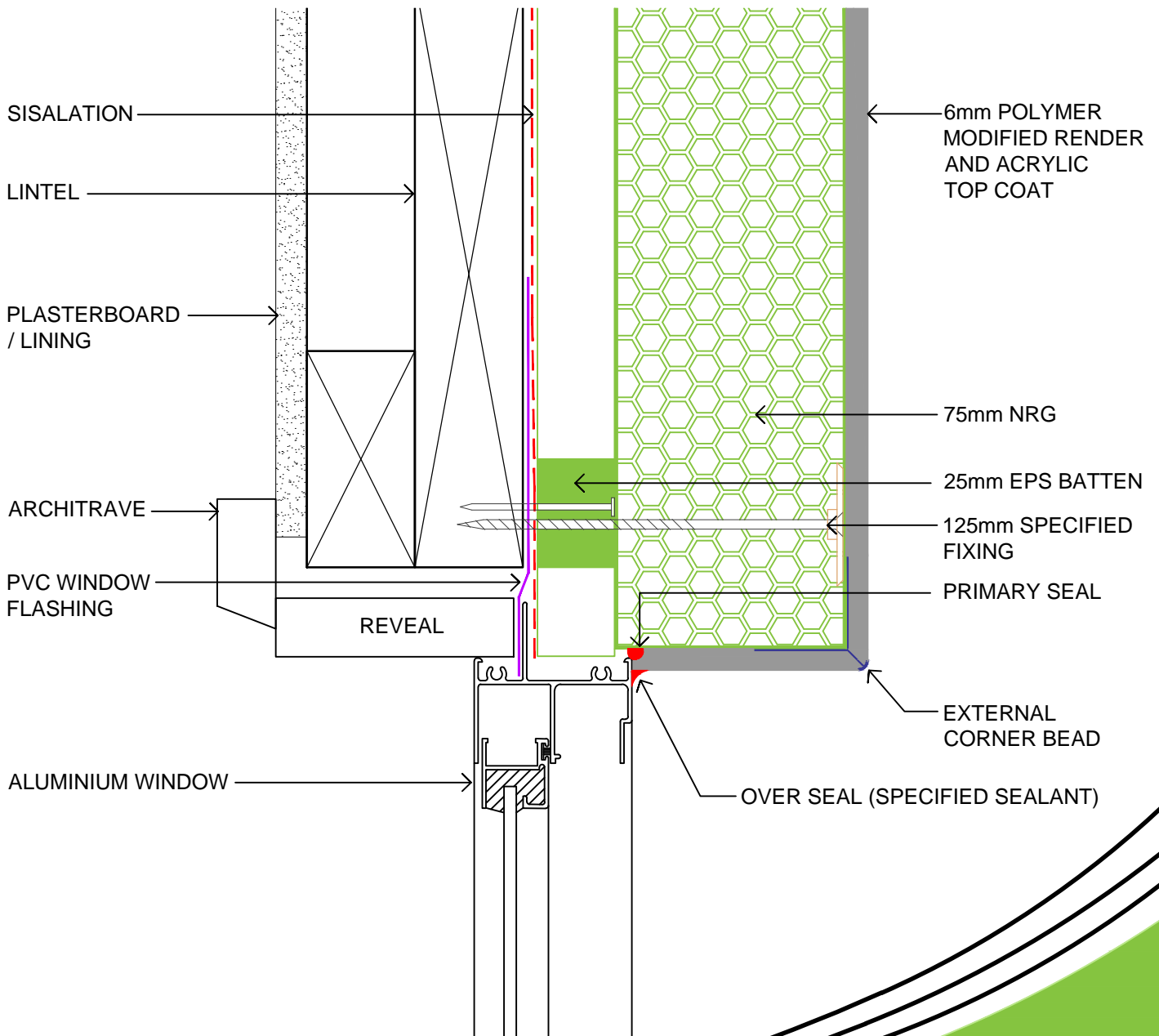
NRG 75 CRF
TIMBER FLOOR DETAIL
DETAIL 3.0



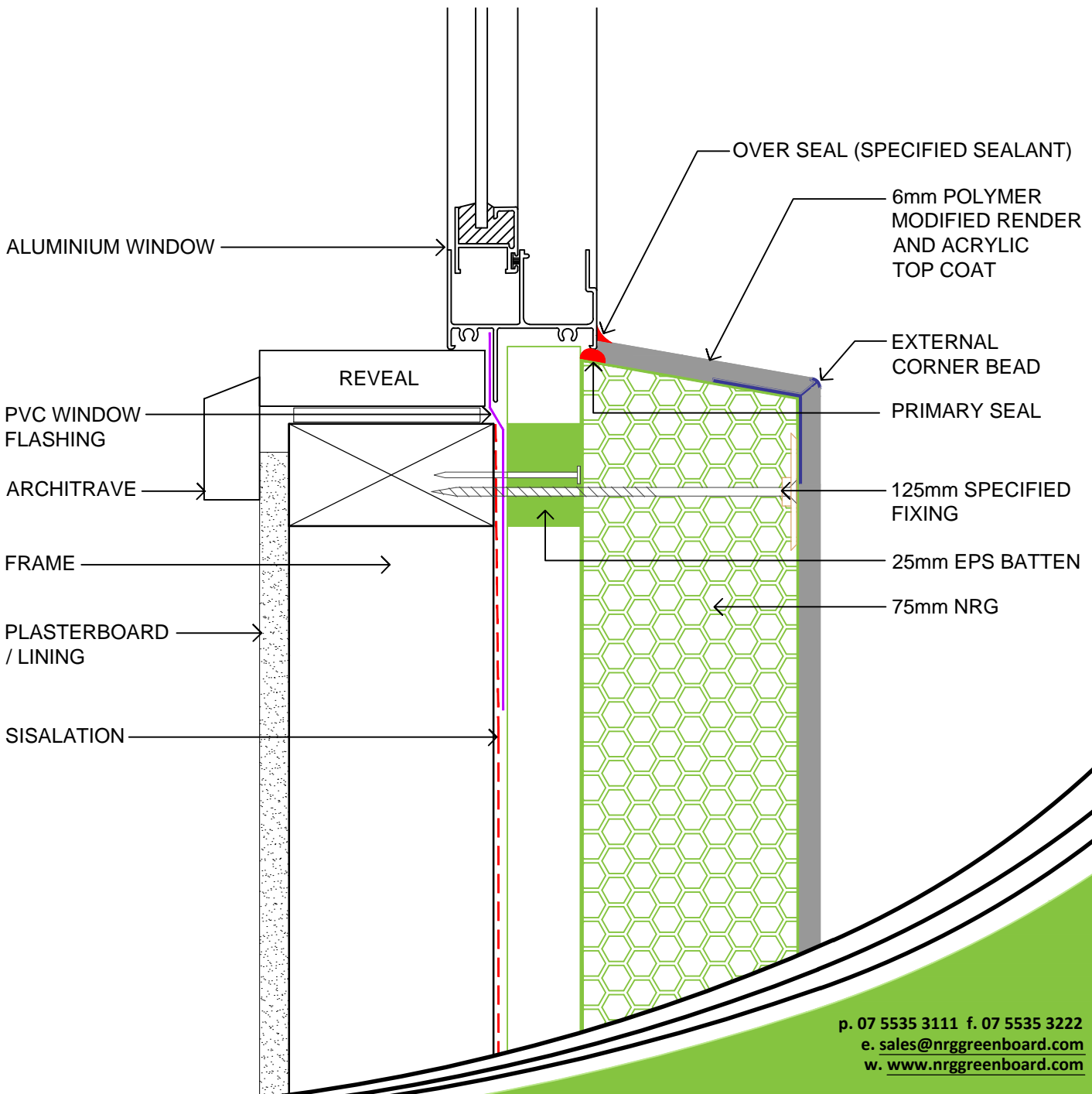
p. 07 5535 3111 f. 07 5535 3222
e. sales@nrggreenboard.com
w. www.nrggreenboard.com

PO Box 2405, Burleigh MDC QLD 4220
Factory 4, 32-38 Dover Drive, West Burleigh QLD 4220

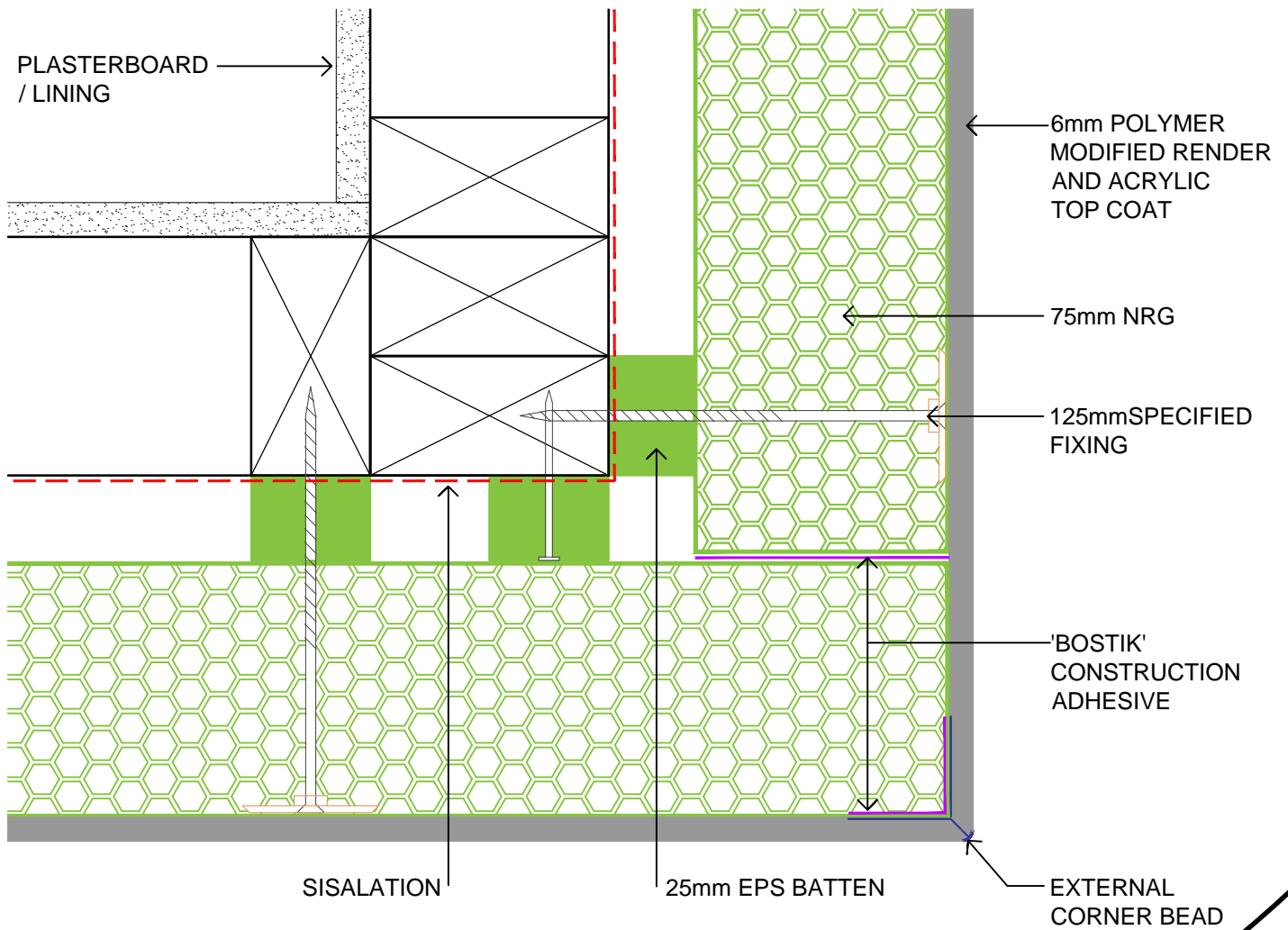
NRG 75 CRF
HEAD & JAMB DETAIL
DETAIL 4.0



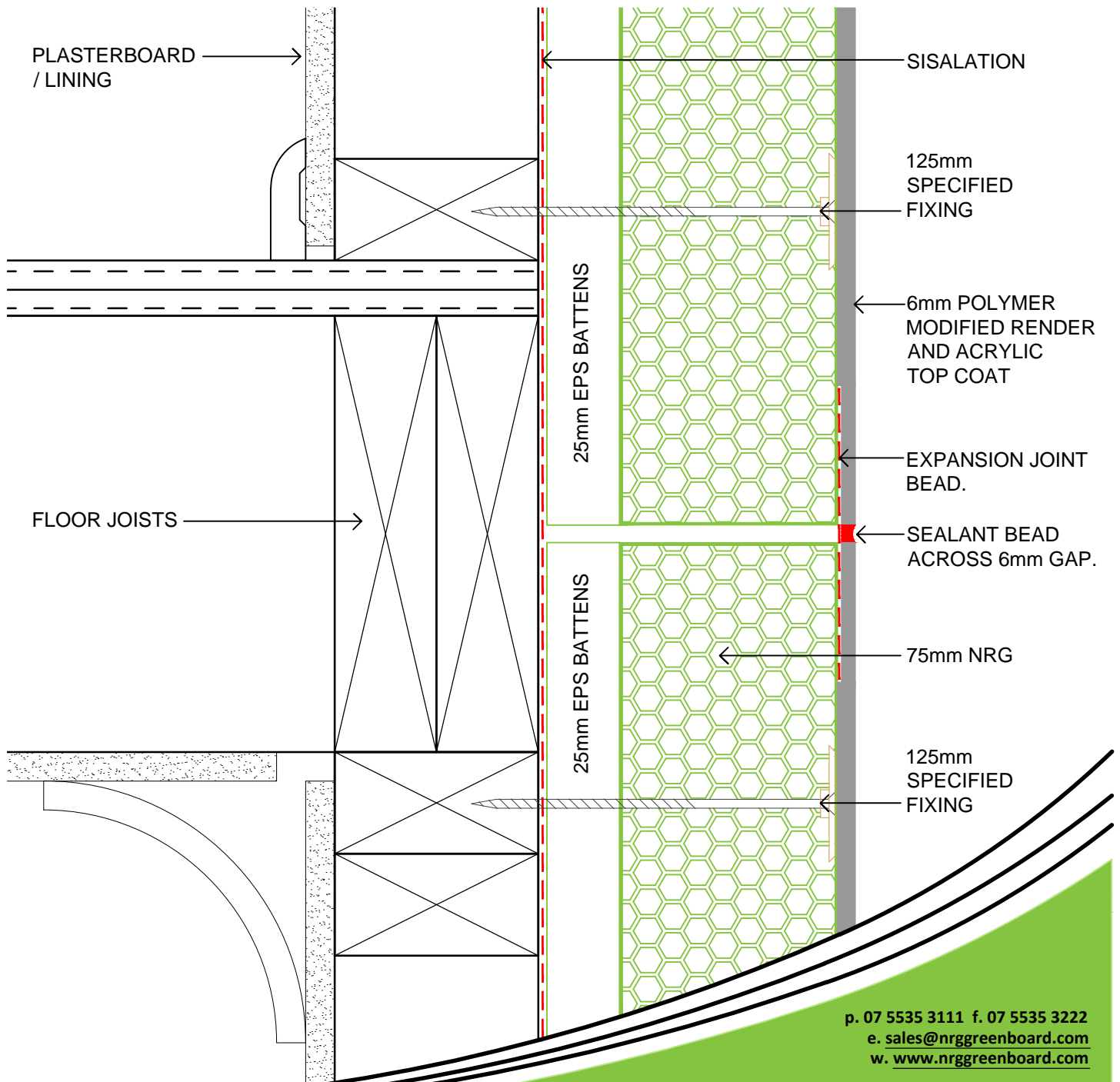
NRG 75 CRF
WINDOW SILL DETAIL
DETAIL 5.0



NRG 75 CRF
EXTERNAL CORNER DETAIL
DETAIL 6.0



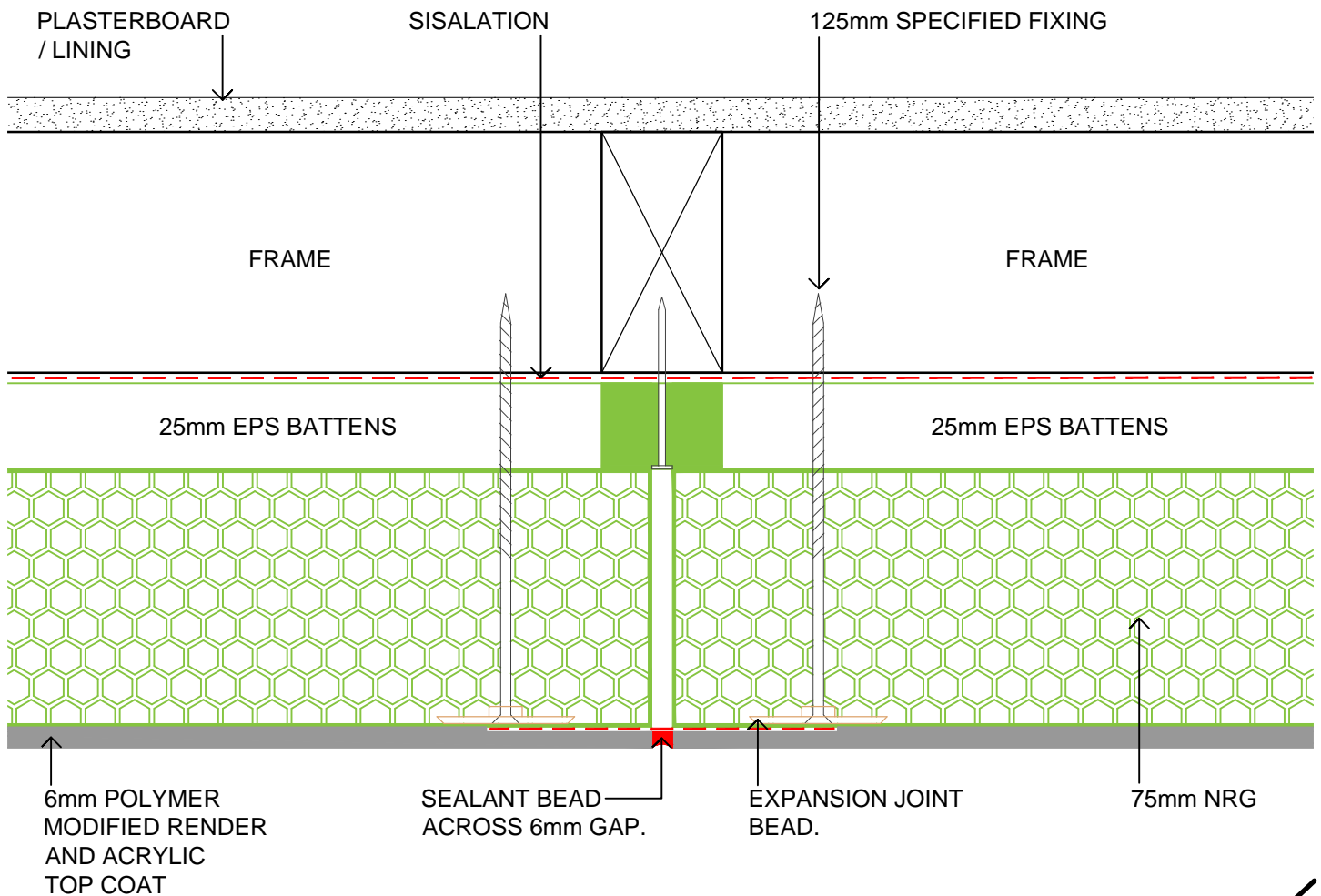
NRG 75 CRF
HORIZONTAL EXPANSION JOINT DETAIL
DETAIL 7.0



p. 07 5535 3111 f. 07 5535 3222
 e. sales@nrggreenboard.com
 w. www.nrggreenboard.com

PO Box 2405, Burleigh MDC QLD 4220
 Factory 4, 32-38 Dover Drive, West Burleigh QLD 4220

NRG 75 CRF
VERTICAL EXPANSION JOINT DETAIL
DETAIL 8.0



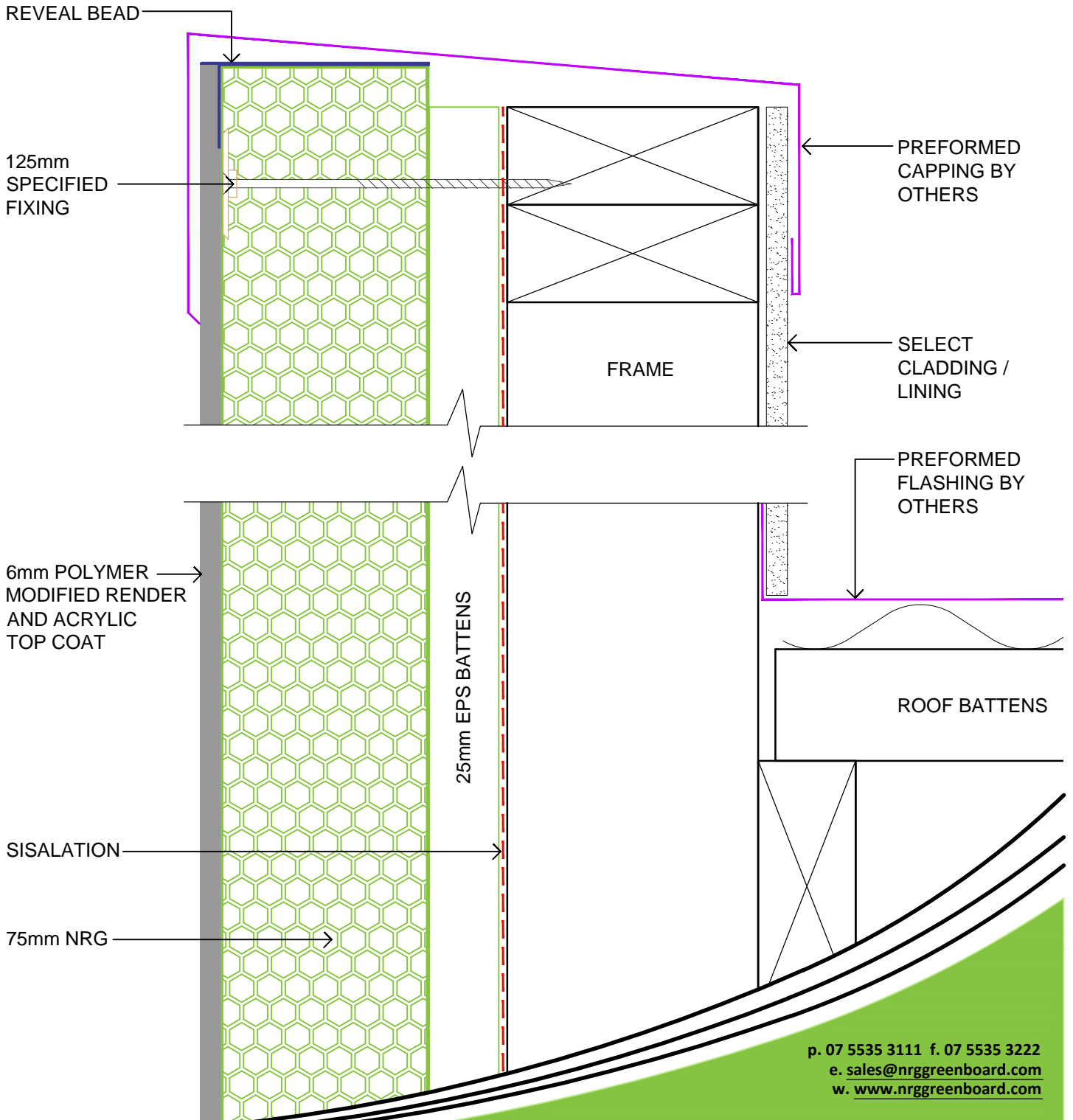
OPTION 2 EXPANSION JOINT DETAIL

- CHALK LINE AFTER RENDER / TEXTURE.
- 20mm CUT THROUGH RENDER AND INTO PANEL USING DIAMOND TIP BLADE.
- TAPE EITHER SIDE OF JOINT.
- SEAL WITH SEALANT.
- REMOVE TAPE AND PAINT.

p. 07 5535 3111 f. 07 5535 3222
 e. sales@nrggreenboard.com
 w. www.nrggreenboard.com

PO Box 2405, Burleigh MDC QLD 4220
 Factory 4, 32-38 Dover Drive, West Burleigh QLD 4220

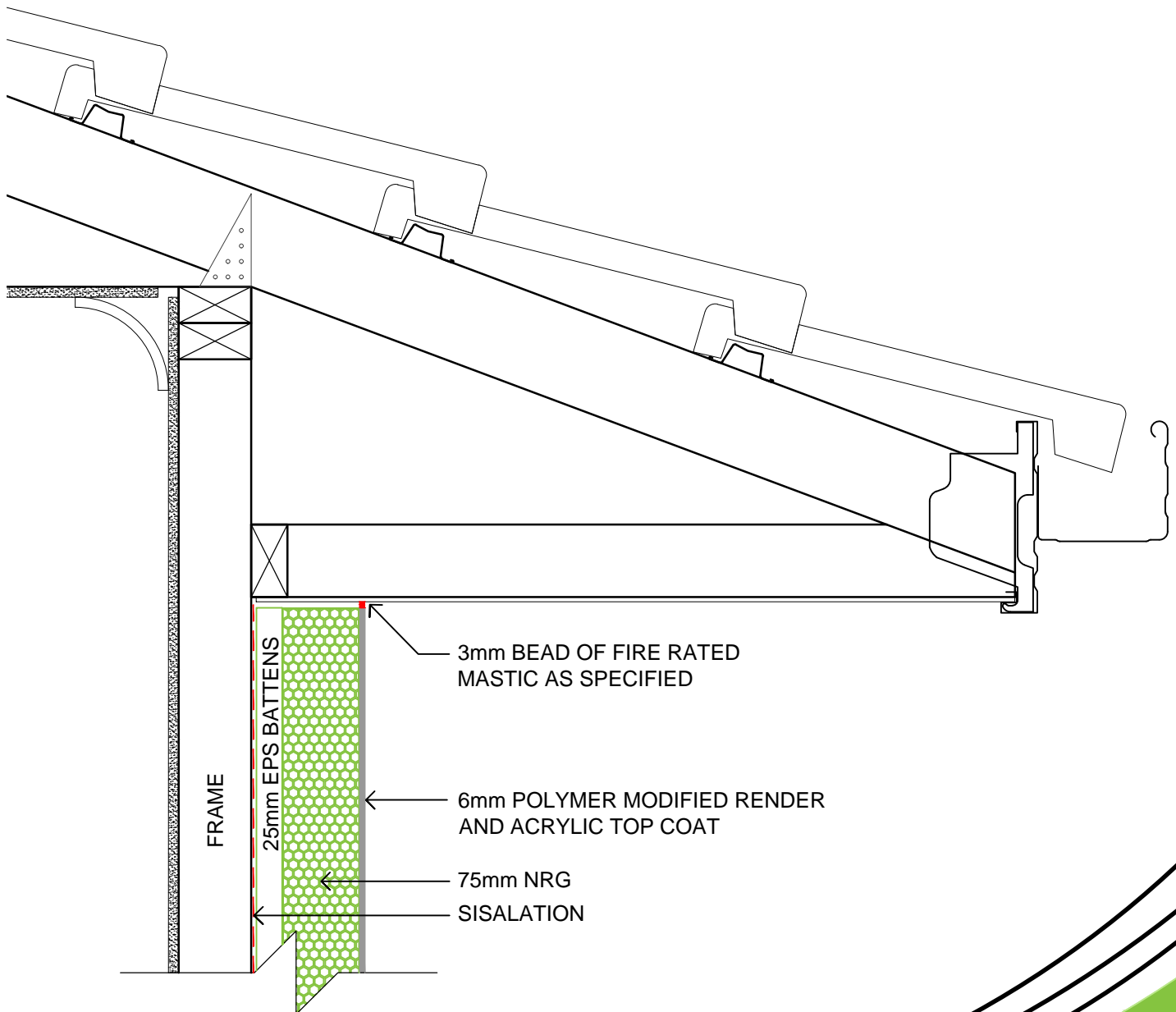
NRG 75 CRF
PARAPET WALL DETAIL
DETAIL 9.0



p. 07 5535 3111 f. 07 5535 3222
 e. sales@nrggreenboard.com
 w. www.nrggreenboard.com

PO Box 2405, Burleigh MDC QLD 4220
 Factory 4, 32-38 Dover Drive, West Burleigh QLD 4220

NRG 75 CRF
SOFFIT DETAIL
DETAIL 10.0



NRG 75 CRF
NRG / MASONRY JUNCTION DETAIL
DETAIL 11.0

